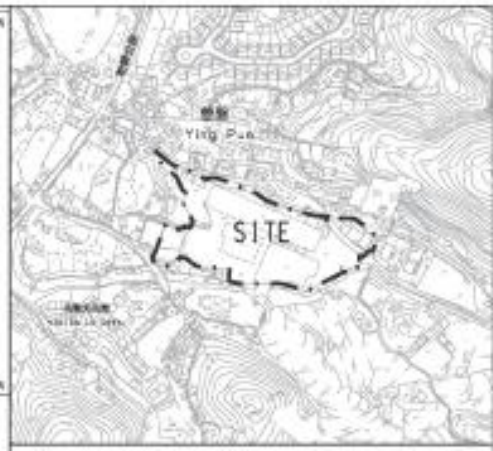
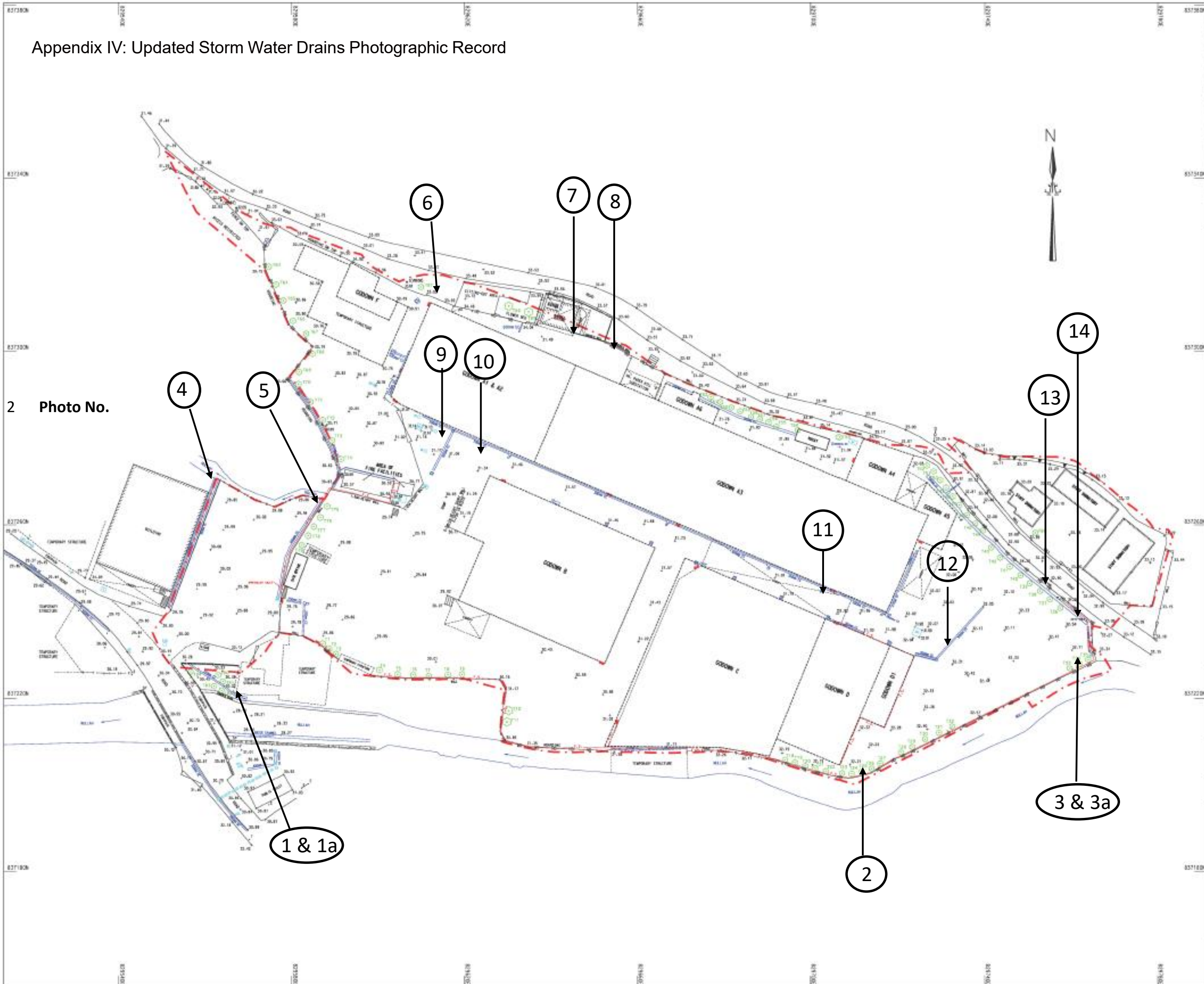


**Appendix IV**  
**Updated Storm Water Drains Photographic Record**  
**(As of April 2026)**

Appendix IV: Updated Storm Water Drains Photographic Record



LOCATION PLAN 1:4,000

NOTES :

1. MEASUREMENTS ARE BASED ON HONG KONG 1980 METRIC GRID & HONG KONG PRINCIPAL DATUM.
2. ALL UNITS ARE IN METRES OR OTHERWISE STATED.
3. ALL LEVELS OF KERBS WERE MEASURED FROM TOE OF KERB.

LEGEND:

- 200mm CC 200mm COVERED U-CHANNEL
- 200mm UC 200mm U-CHANNEL
- FENCE/RAILING
- LEVEL POINT
- L LAMP POST
- S SIGN POLE
- T TELEPHONE POLE
- E ELECTRICITY POLE
- M MANHOLE TELEPHONE
- W MANHOLE STORM WATER
- F MANHOLE FOUL WATER
- MANHOLE
- MANHOLE EMB
- MANHOLE POWER LINE
- V VALVE WATERWORKS
- G GULLY/GRATING
- H HEARDING
- STANDING WALL
- STAIR/STEP EDGE
- G GATE
- TEMPORARY STRUCTURE
- C CANOPY
- CATCH PIT
- CULVERT
- F FLOWER BED
- BUILDING LINE
- TREE & TREE NO.
- FIRE EXTINGUISHER
- FIRE HOSE REEL
- FIRE SERVICES PIPE
- BOUNDARY LINE FOR PLANNING APPLICATION

② Photo No.

PROJECT :  
Topographical and Tree Location Survey for Various Lots in D.B.100 and the Adjoining Government Land in Ying Pun, Kwo Tung South

DATE OF SURVEY May 2026	SCALE AT A1 1:400
DRAWING NUMBER KEL/TOPD/26/03	REVISION 0

Plan Approved By:

Signature:

Sr. Dr. Prof. Ching Siu-tang  
Authorized Land Surveyor  
FHSIS, FHSIS, MSL(M), R.P.S.(LS), MSL(M), MSL (Auth.)

Dated this: 22nd day of May 2026

建地測量、規劃及地理資訊系統有限公司  
KELand Surveying, Planning & GIS Co. Ltd.

Photo No. 1: Discharge Point 1



Photo No. 1a: Discharge Point 1



Photo No. 2: Discharge Point 2



Photo No. 3: Discharge Point 3



Photo No. 3a: Discharge Point 3

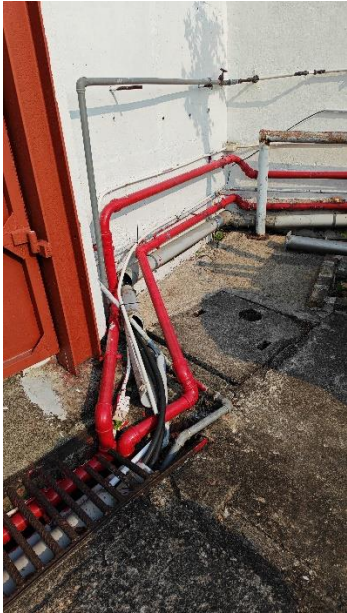


Photo No. 4: Existing Stream Condition



Photo No. 5: Existing 225 U/C Condition



Photo No. 6: Existing 225 U/C Condition



Photo 7: Existing 225 U/C Condition



Photo 8: Existing 600 U/C Condition



Photo 9: Existing 225 U/C Condition



Photo 10: Existing 225 U/C Condition



Photo No. 11: Existing 225 U/C Condition



Photo 12: Existing 225 U/C Condition



Photo 13: Existing 600 U/C Condition



Photo 14: Existing 600 U/C Condition

